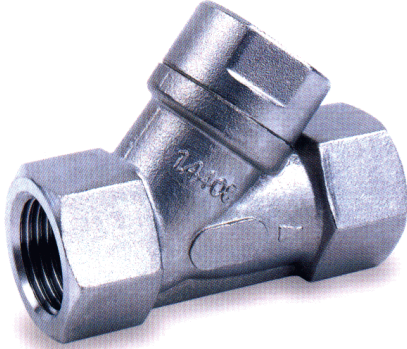


600# WOG STAINLESS STEEL PISTON CHECK VALVE

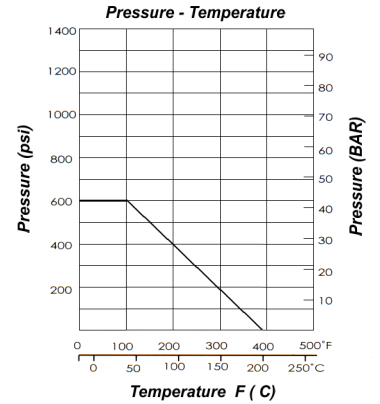
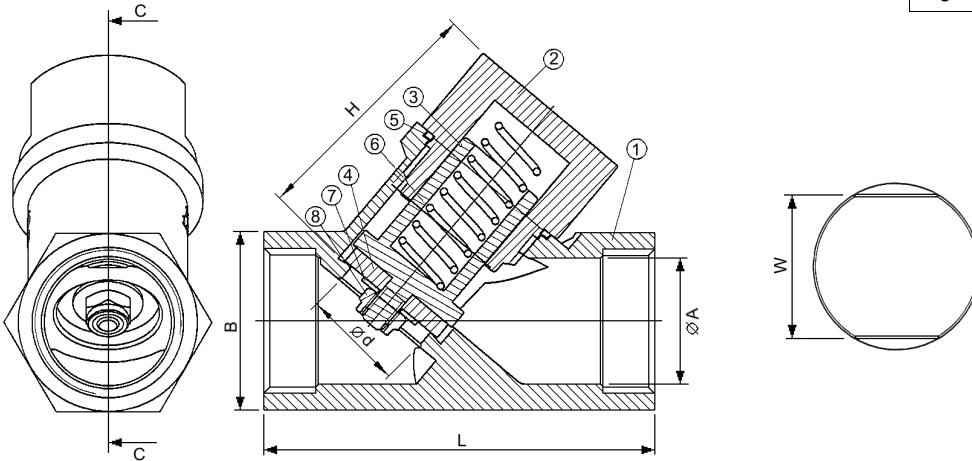
FIG. T3PC



Ends: ANSI B1.20.1
 Size range: 1/4" to 2"
 Pressure 1/4" to 2": 600 psi (WOG)
 Max. Temperature: 350 °F

Materials:

No.	Part Name	Specification
1	Body	ASTM A351-CF8M
2	Cap	ASTM A351-CF8M
3	Disc	AISI 316
4	Seat	PTFE
5	Joint Gasket	PTFE
6	Spring	AISI 316
7	Washer	AISI 304
8	Nut	AISI 304 + Plastic



Dimensions:

Size		ød		øA	L		B		H		W		Cracking Pressure	CV	Weights	
in	mm	in	mm	mm	in	mm	in	mm	in	mm	in	mm	psi		lbs	kgs
1/4"	8	.46	11.6	11	2.59	65.8	1.06	27	1.47	37.4	.94	24	0.2	1.8	0.62	0.28
3/8"	10	.49	12.5	14	2.59	65.8	1.06	27	1.47	37.4	.94	24	0.2	3.4	0.55	0.25
1/2"	15	.49	12.5	17.5	2.59	65.8	1.06	27	1.47	37.4	.94	24	0.2	5.7	0.51	0.23
3/4"	20	.71	18	23	2.98	75.7	1.27	32.3	1.76	44.6	1.18	30	0.3	12.6	0.84	0.38
1"	25	.93	23.5	29	3.53	89.7	1.61	41	2.24	56.9	1.38	35	0.3	24	1.58	0.72
1 1/4"	32	1.24	31.4	38	4.32	109.8	1.97	50	2.53	64.2	1.57	40	0.5	38	2.68	1.22
1 1/2"	40	1.41	35.7	44	4.76	121	2.19	55.5	2.99	76	1.77	45	0.5	57	3.41	1.55
2"	50	1.79	45.5	56	5.97	151.6	2.76	70	3.43	87	2.17	55	0.5	104	6.05	2.75